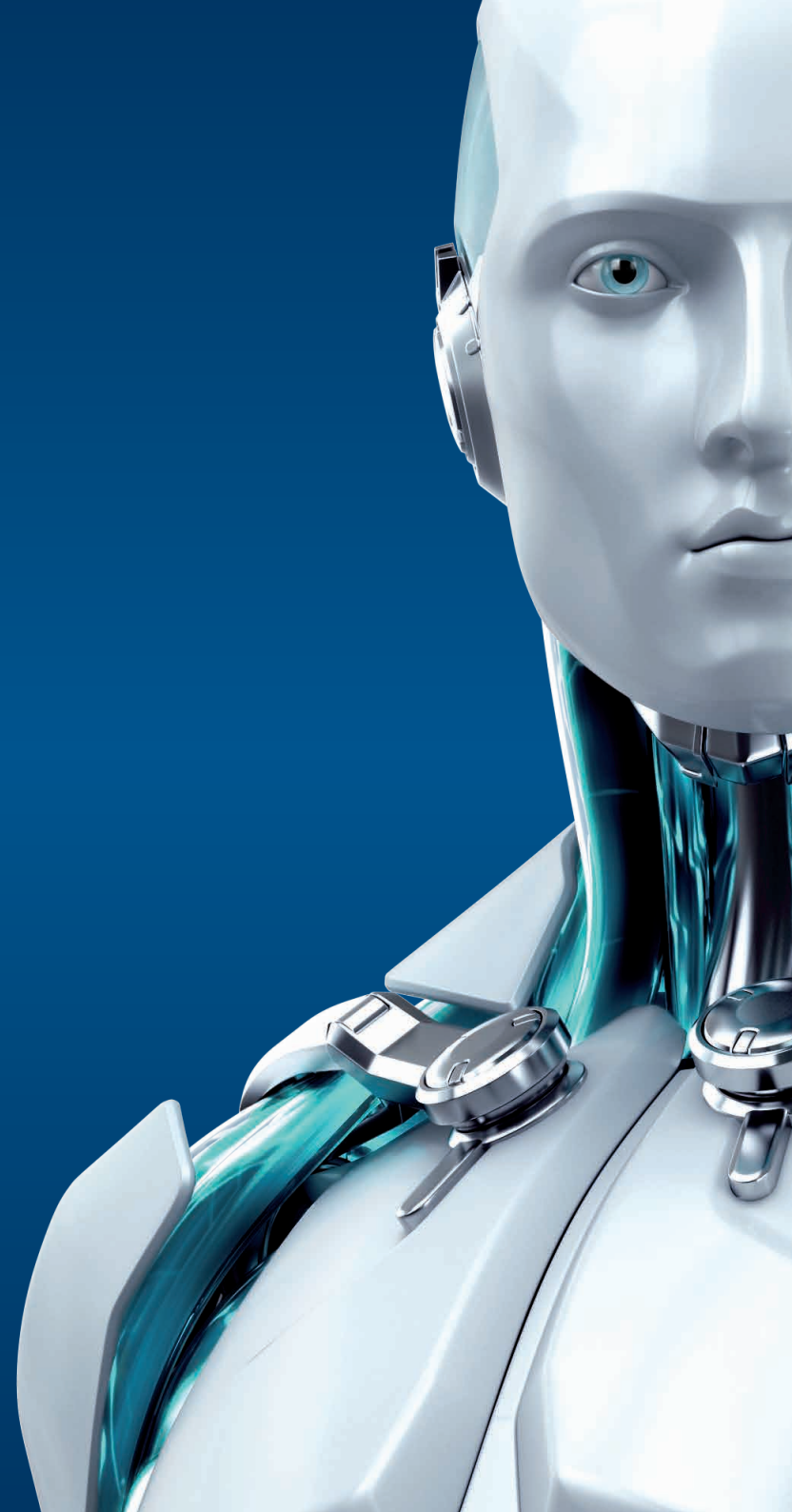




**GATEWAY
SECURITY**
FOR LINUX/BSD/SOLARIS

ENJOY SAFER TECHNOLOGY™





Operating Systems:

Linux:

Kernel version 2.6.x
glibc 2.3.6 or higher

FreeBSD:

Version 6.x or 7.x & 8.x

Sun Solaris:

Version 10

NetBSD:

Version 4

Processor Architecture:

Intel®/AMD® x86/x64



WHAT IT DOES

Antivirus and Antispyware

Eliminates all types of threats, including viruses, rootkits, worms and spyware
Provides real-time on-access scanning of HTTP and FTP protocols
Scans large files without delay for a consistent level of network security
Powered by the advanced ThreatSense® technology combining speed, accuracy and minimal system impact

Cross-platform Protection

Eliminates malware targeting all platforms, including Windows, Mac and Linux operating systems
Prevents malware from spreading from one platform to another

Remote Administration

Compatible with ESET Remote Administrator and supports management through a web interface
Delivers detailed information about system activity and infected endpoints
Offers a set of pre-defined actions after scanning completes

Smooth Operation

Offers customizable black/white -listing of websites
Provides ICAP server role support
Supports SafeSquid and SafeSquid Internet Proxy Cache
Runs all executive agents under non-privileged user account

Distribution-Independent Solution

ESET provides installers for the most popular distributions of Unix-based systems, including the 'Ready' variations of RedHat and SuSE that comply with the File-System-Hierarchy standard



**ESET
PREMIUM
SUPPORT**

Enquire about ESET Premium Support for priority access to IT security professionals 365/24/7