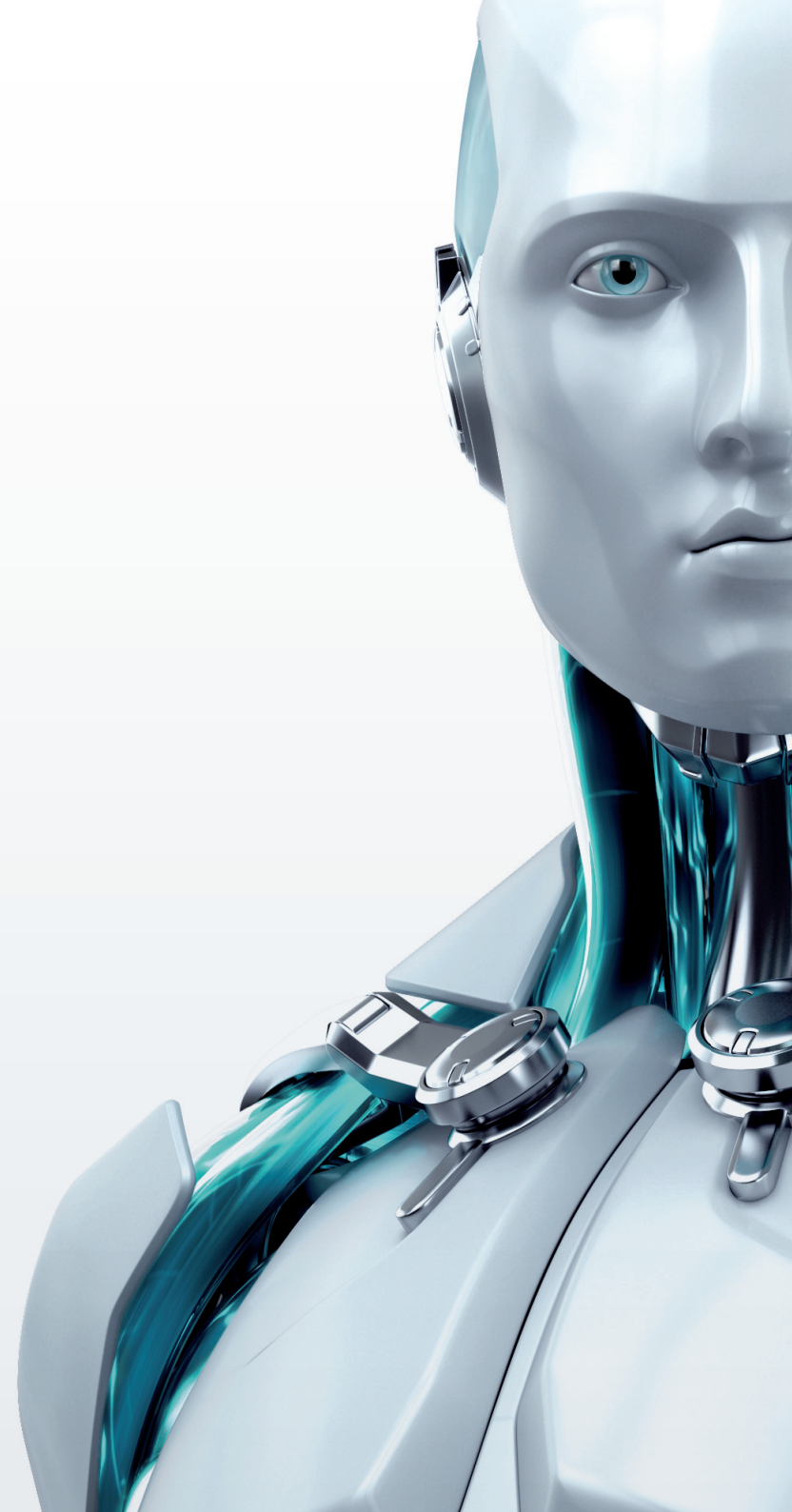


ESET MAIL SECURITY

FOR LINUX/BSD/SOLARIS



www.eset.com





Operating Systems:

Linux: Kernel version 2.6.x; glibc 2.3.2 or higher
 FreeBSD: Version 6.x, 7.x, 8.x
 Sun Solaris: Version 10
 NetBSD: Version 4

Processor Architecture:

Intel®/AMD® x86/x64



WHAT IT DOES

Antivirus and Antispyware	<p>Scans all inbound and outbound POP3, SMTP and IMAP traffic</p> <p>ESETS SMTP module runs independent of the Mail Transport Agent (MTA)</p> <p>Filters out email-borne threats, including spyware at the gateway level</p> <p>Powered by the advanced ThreatSense® technology combining speed, accuracy and minimal system impact</p>
Antispam	<p>Stops spam and phishing messages with high interception rates</p> <p>Features improved antispam engine with an option to define threshold levels with great precision</p>
Cross-platform Protection	<p>Eliminates malware targeting all platforms, including Windows, Mac and Linux operating systems</p> <p>Prevents spreading of malware from one platform to another</p>
Remote Administration	<p>Compatible with ESET Remote Administrator and supports management through a web interface</p> <p>Gives you the option to schedule on-demand scans, actions and security tasks</p> <p>Allows you to customize log details and modify reports and notifications to help you monitor compliance with company security standards</p>
Smooth Operation	<p>Features content filters for Postfix, Sendmail, Qmail, Exim, Zmailer, and others</p> <p>Smoothly integrates in the Novell Groupwise environment</p> <p>Ready for integration with Zarafa collaborative software</p> <p>Built-in license manager automatically merges two or more licenses with the same customer name</p>
Distribution Independent Solution	<p>ESET provides installers for the most popular distributions</p> <p>Gives you the option to use the general installation package for less common systems not supported directly</p>